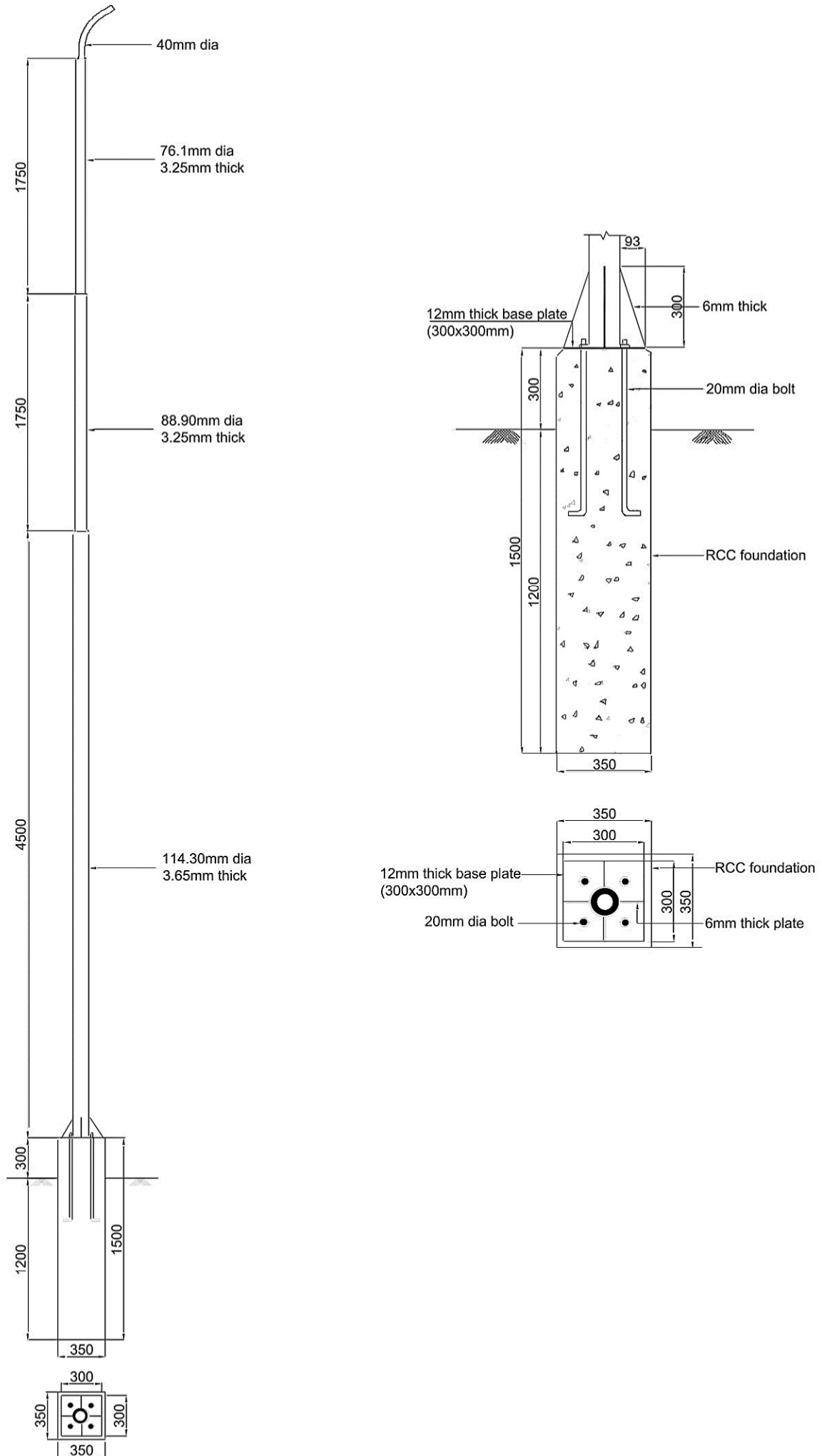
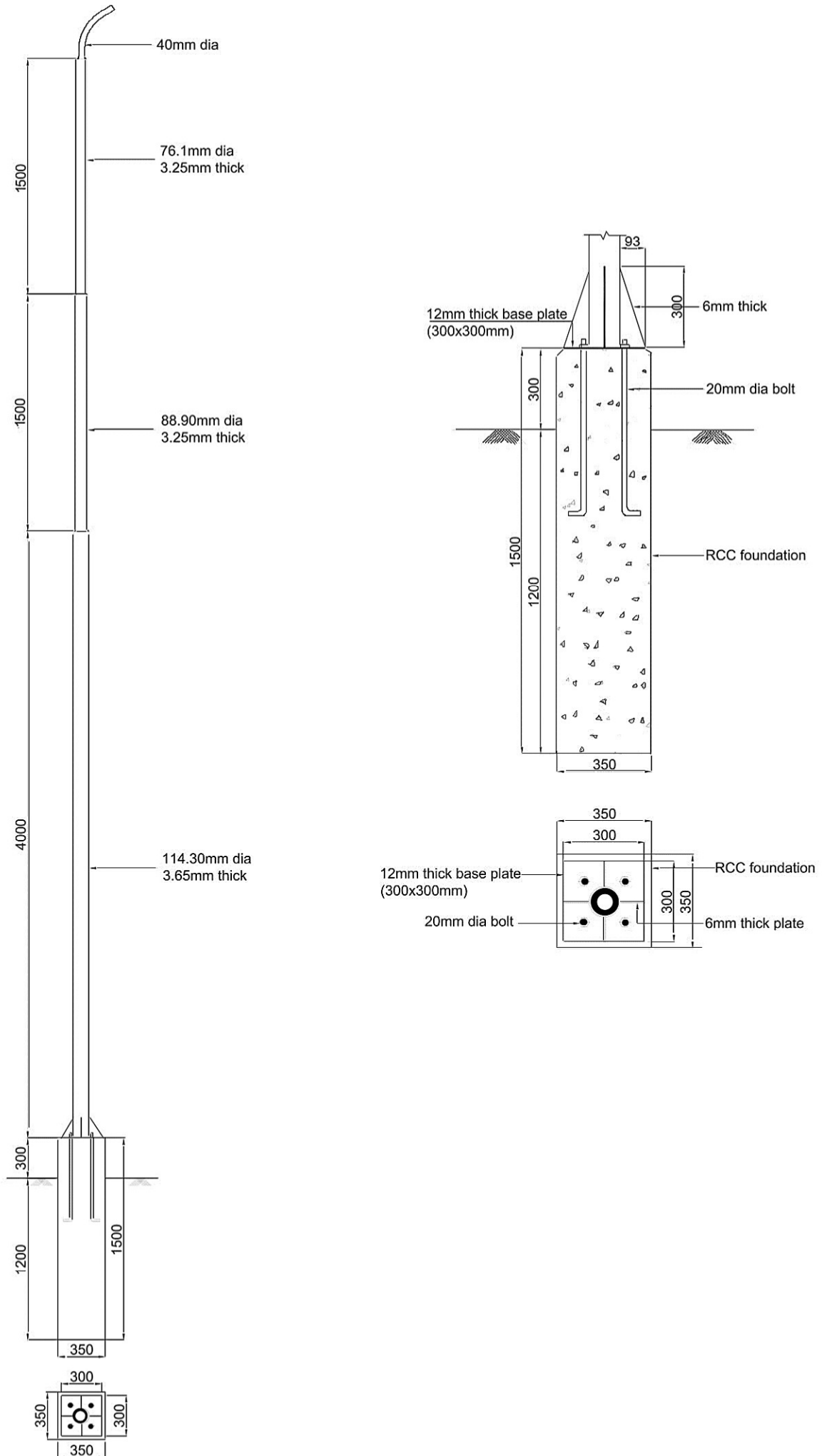


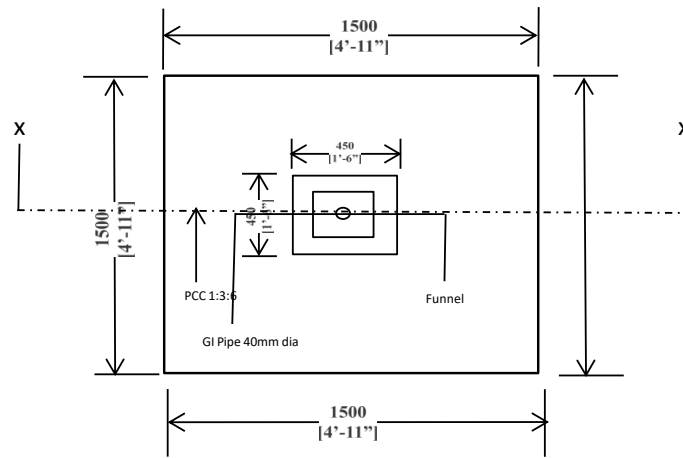
FLOOD LIGHT POLE & FOUNDATION DETAIL



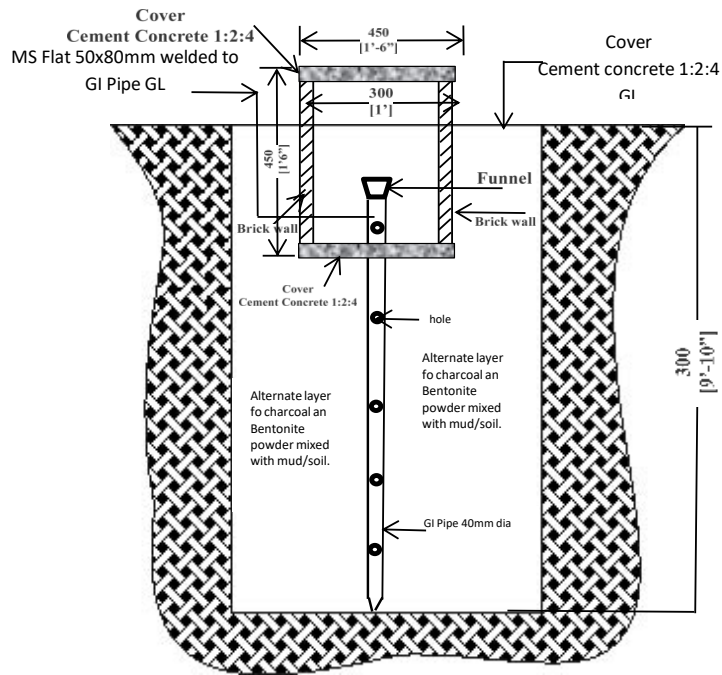
STREET LIGHT POLE & FOUNDATION DETAIL



DRAWING SHOWING DIMENSION FOR PIPE EARTHING FOR SUB-STATION



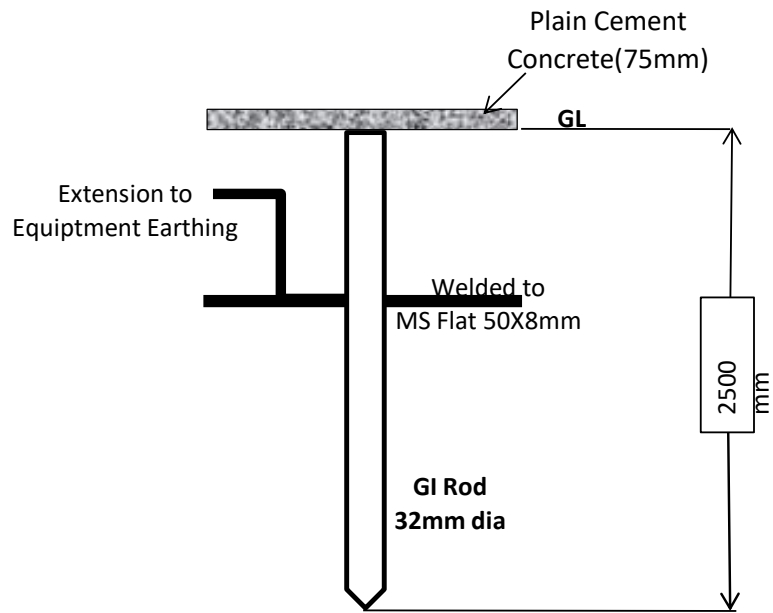
PLAN



PLAN & SECTION

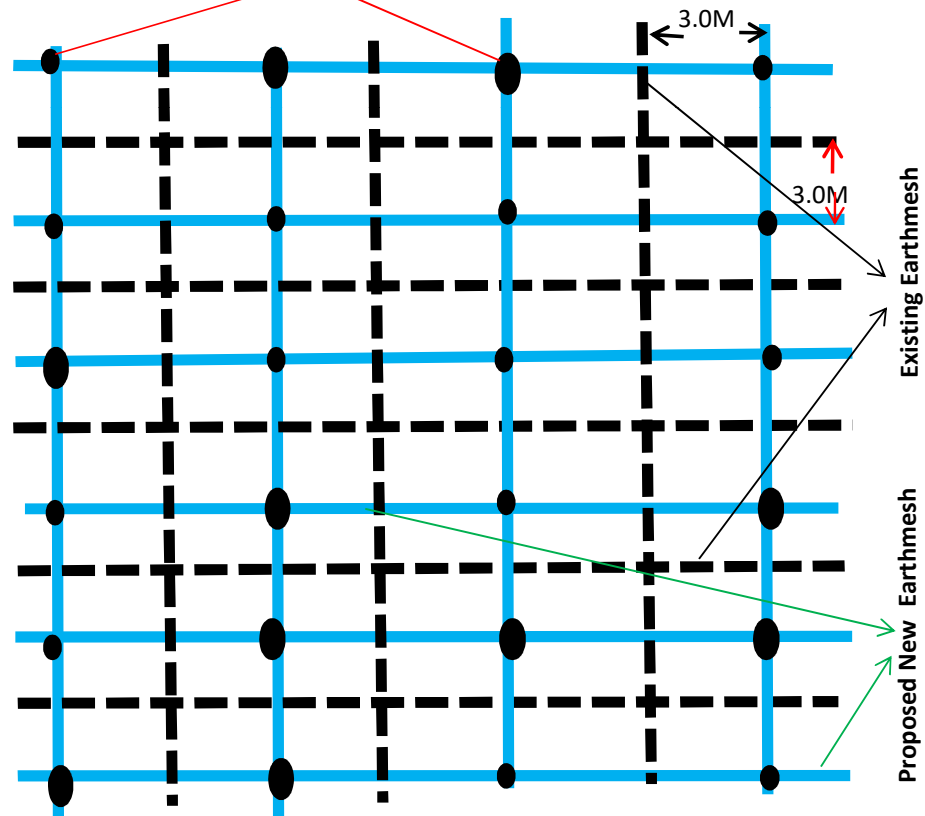
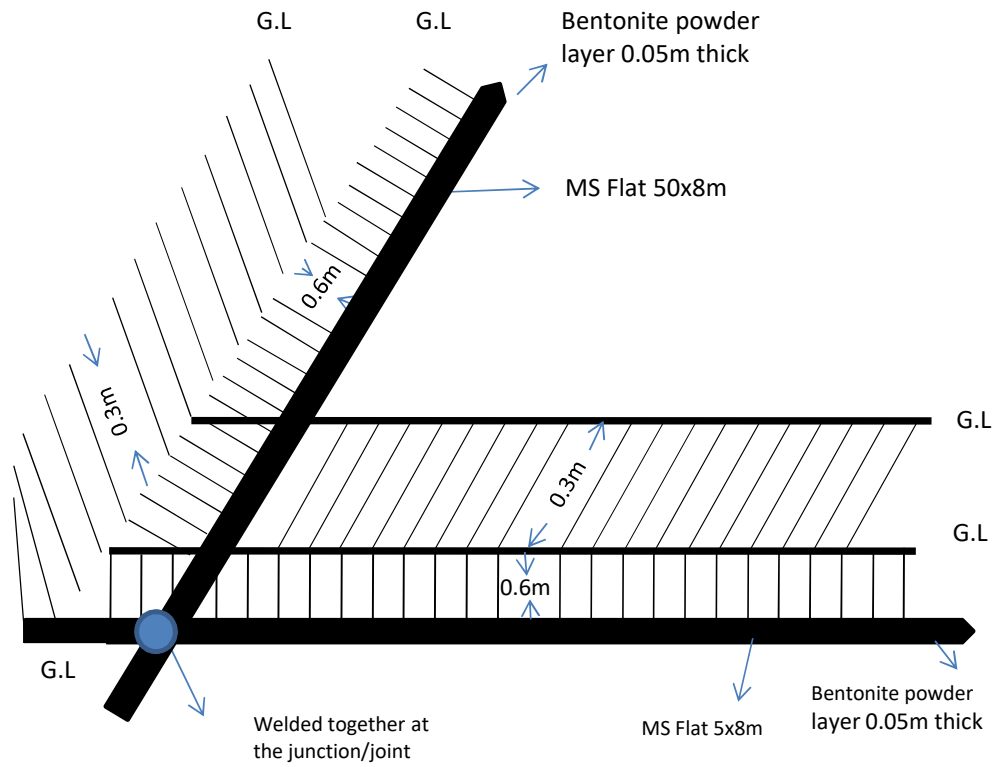
SCALE : NTS

DRAWING SHOWING DIMENSION FOR ROD EARTHING FOR SUB-STATION



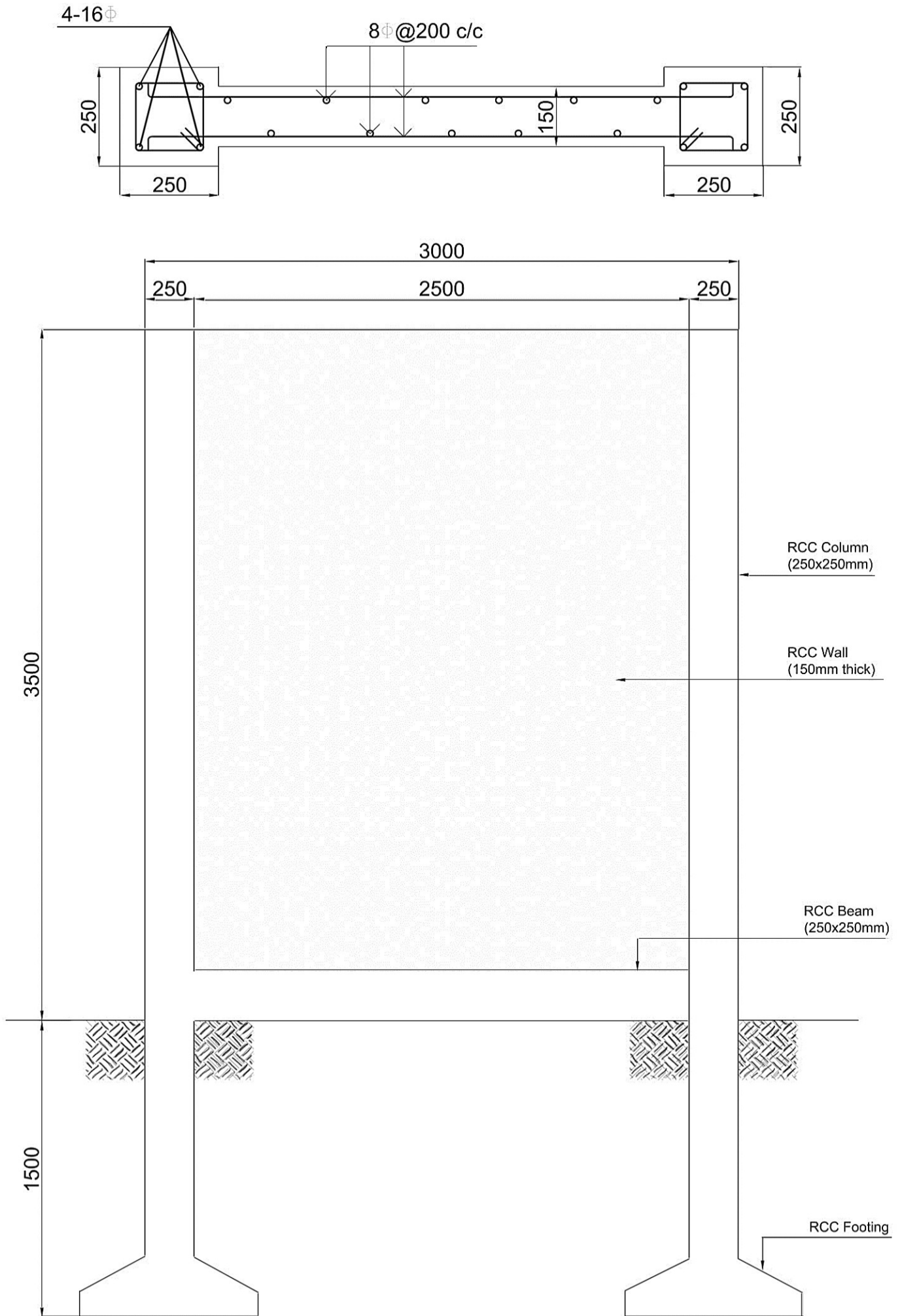
SCALE:- NTS

DRAWING SHOWING EARTH MESH BY BURYING MS FLAT



SCALE:- NTS

RCC FIREWALL (3.50m HIGH)



RCC FIREWALL (3m HIGH)

